

SCHEME

Valeton 2 Waste Water Treatment Plant, Paris

CLIENT

Syndicat Interdépartemental pour l'Assainissement de l'Agglomération Parisienne (SIAAP)

CONSULTANT

Degrémont - OTV

CONTRACTOR

TPI and Chantiers Modernes, Eiffage TP, Campenon Bernard and Bouygues TP

PIPE APPLICATION

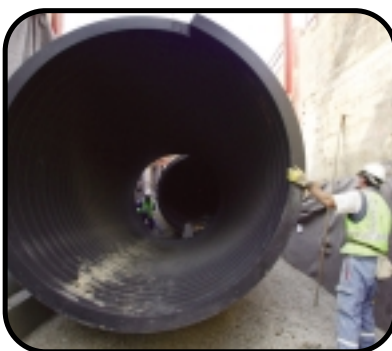
1.5km of 1.5m, 2m and 2.5m diameter HDPE Class 4kN/m² WEHOLITE pipe



Paris water treatment project relies on WEHOLITE

Use of the high-tech HDPE (high density polyethylene) WEHOLITE pipe has enabled contractors to overcome difficult landfill conditions at this 450 million water treatment plant situated in the south east region of the Paris capital. This massive infrastructure project involved the installation of 1.5km of WEHOLITE large diameter pipework, a first on a major European project for UK manufacturer ASSET International Ltd through its French distributor Hydrotub Polypipe S.A.S.

The extension works underway involve the construction of two 50m diameter preliminary settlement tanks, two 190m x 80m aeration tanks, eight 60m diameter final settlement tanks, plus pre-treatment works, a pumping station and storage facilities.



Significant additional savings were also made by utilizing WEHOLITE pipe to connect the various structures of the new treatment plant, reducing the size of equipment required to handle the pipe

and speed of installation. The huge project involved over 200 companies, with up to 750 people on-site for peak construction operations. Site space was at a premium.



"The lightness and flexibility of plastic WEHOLITE pipe was a great benefit on this scheme as it avoided the need for both costly lifting equipment and the installation of extensive piled supports to counter for the poor ground conditions," said Fabrice Blandin, Commercial Director at Hydrotub Polypipe S.A.S.

In addition, the 1.5m and 2m diameter pipes could be laid in 12m lengths, thus saving time and minimising the impact of pipe laying on other activities on-site.

According to M. Blandin, the use of lightweight plastic pipes also brought benefits to the local environment as it allowed the number of lorry movements needed to deliver pipe to the site be cut by up to two thirds.

THE ESSENTIAL SOLUTION FOR PIPE USERS NATIONWIDE

CONTACT ASSET International Ltd:

Head office: Stephenson Street, Newport, South Wales, NP19 4XH
Tel: 01633 271906 - Fax: 01633 290519 - E-mail: sales@assetint.co.uk - Web site: www.weholite.co.uk

Scottish office: 1 McMillan Road, Netherton Industrial Estate, Wishaw, Lanarkshire, ML2 0LA
Tel: 01698 355838 - Fax: 01698 356184